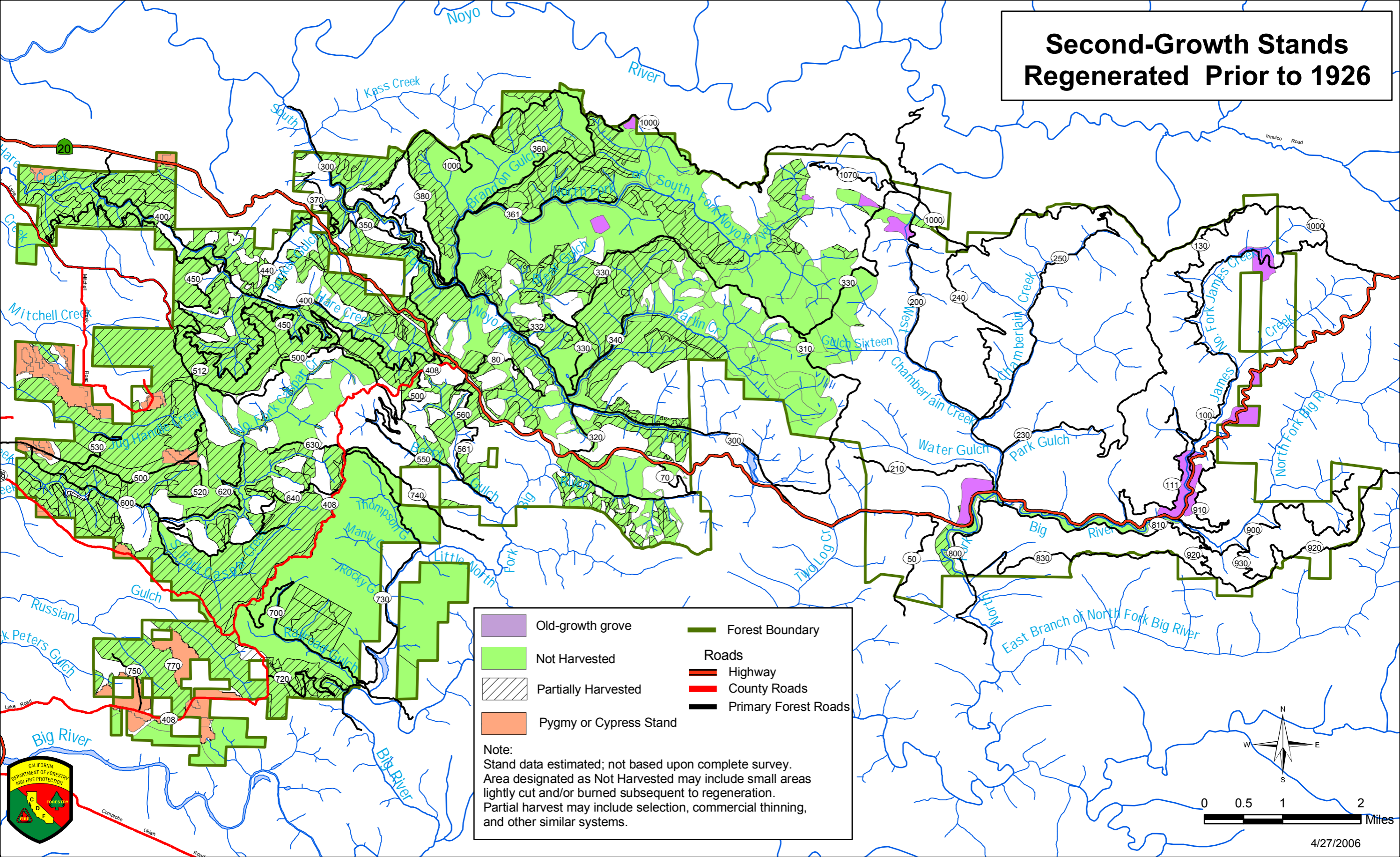


Second-Growth Stands Regenerated Prior to 1926



	Old-growth grove		Forest Boundary
	Not Harvested	Roads	
	Partially Harvested		Highway
	Pygmy or Cypress Stand		County Roads
			Primary Forest Roads

Note:
 Stand data estimated; not based upon complete survey.
 Area designated as Not Harvested may include small areas lightly cut and/or burned subsequent to regeneration.
 Partial harvest may include selection, commercial thinning, and other similar systems.

