

## **Hare Creek THP Summary**

2008 November

Status: THP completed fall 2008. Timber operations spring 2009.

***JAG review anticipated December 2008 to January 2009***

### Watershed and Area:

Hare Creek

Total THP area: 250 acres

### Resources:

- Forest: Second and third-growth redwood/Douglas fir forest, with component of grand fir and hemlock. Hardwoods primarily tanoak with minor component of madrone and alder. Understory primarily conifer and tanoak regeneration, with sword fern, huckleberry, and manzanita.
- Geology: Coastal belt Franciscan formation. Very low to low landslide potential. Active instabilities along some old roadways, associated with fill failures.
- Wildlife and Fishery: Coho salmon and steelhead in Hare Creek downstream. NSO sites known to the vicinity.
- Botanical- the only listed occurrence observed: a CNPS 1B.2 listed species (Mendocino cypress) on a landing (no mitigation proposed)
- Recreation: Use of Roads 400, 450, and connectors in the area, primarily by hikers, bicyclists, and equestrians. Some illegal ATV use in the area.
- Heritage: Near-by historic site associated with railroad-era logging.

### Stand Characteristics:

- Stand Management History: Old-growth forest clearcut between 1880 and 1920. Second-growth stand selectively harvested in 1973, and again in 1988
- Stocking: Conifer 220 square feet basal area; hardwood  $\pm 10$  square feet.
- Volume: Conifer 34,000 board feet per acre.

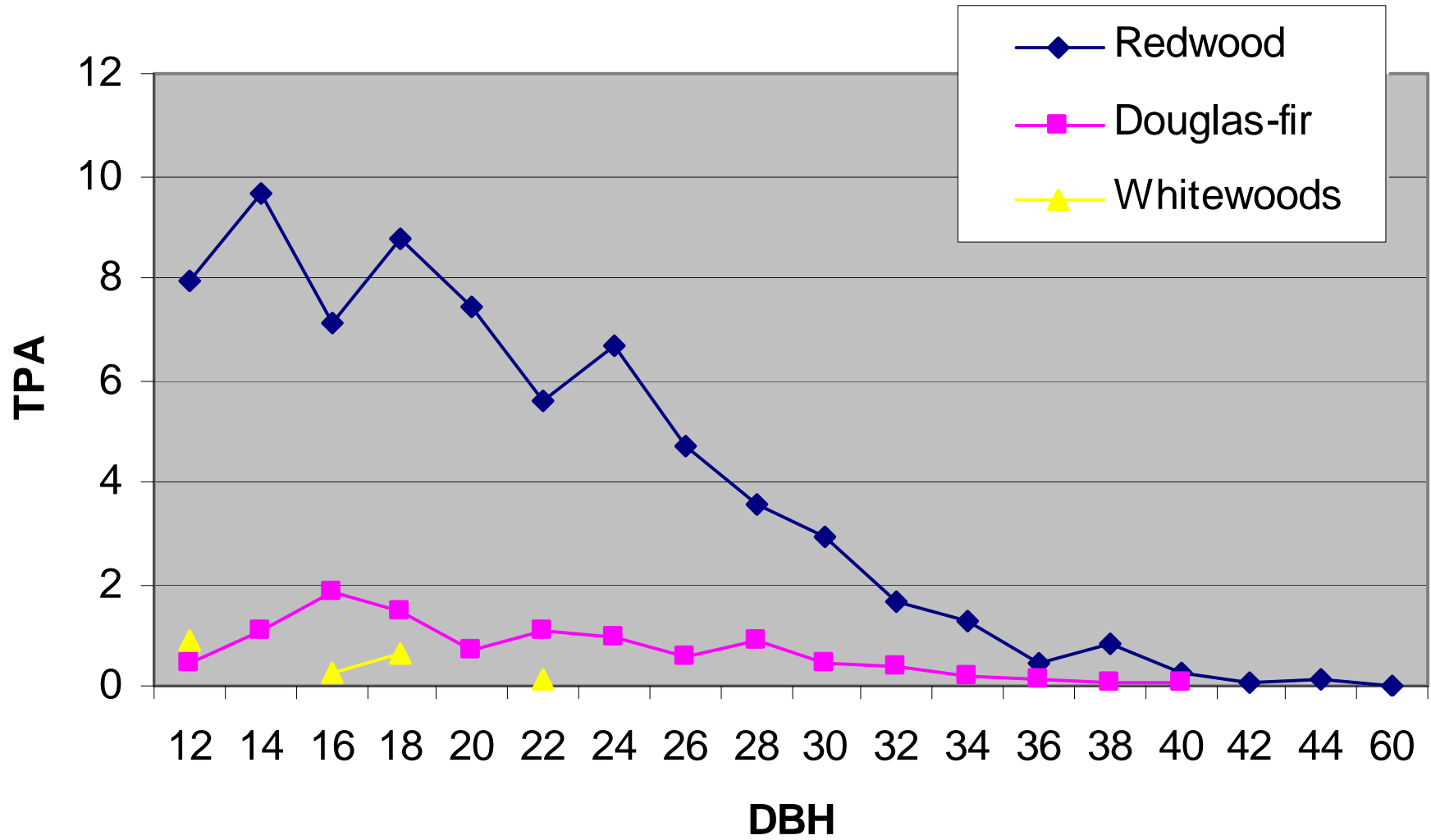
### THP Specifications:

- Watercourse Protection: Class II limited harvest and high retention; Class III selection
- Plant and Terrestrial Wildlife Protection: No special provisions needed.
- Silviculture: selection per Interim Harvest limitations
- Roads: Some new spur road construction and use of existing roads. Slide bypass construction.
- Yarding: Cable 25 percent; tractor 75 percent (estimated)
- Restoration: Decommissioning of selected road segments, improvement of drainage along selected segments of existing road.

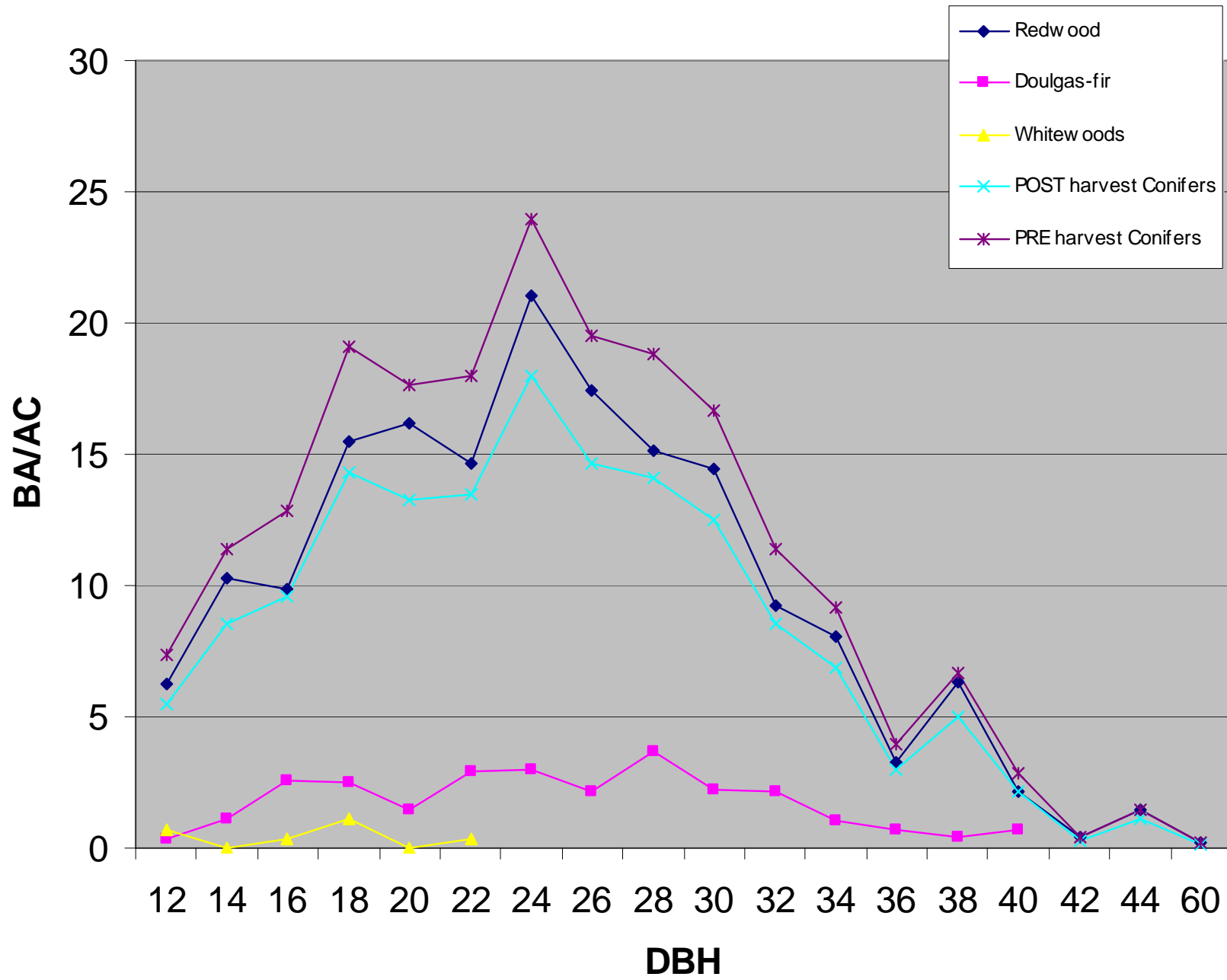
### Research and Demonstration:

- Demonstration of Interim Harvest limitations.
- Creation of 4th age class through selective management.
- Road decommissioning.

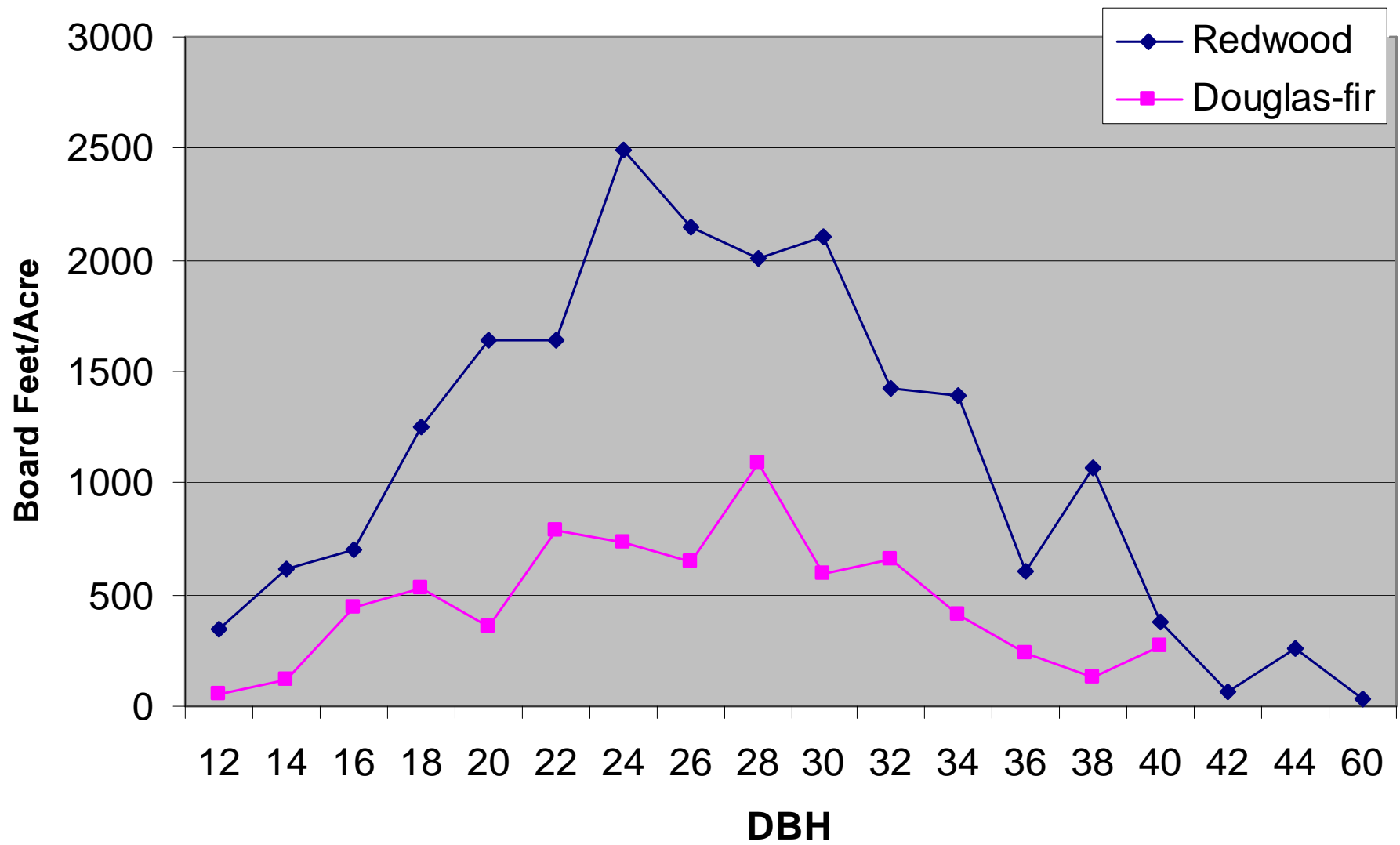
# Hare Creek 2009 Preharvest Stand



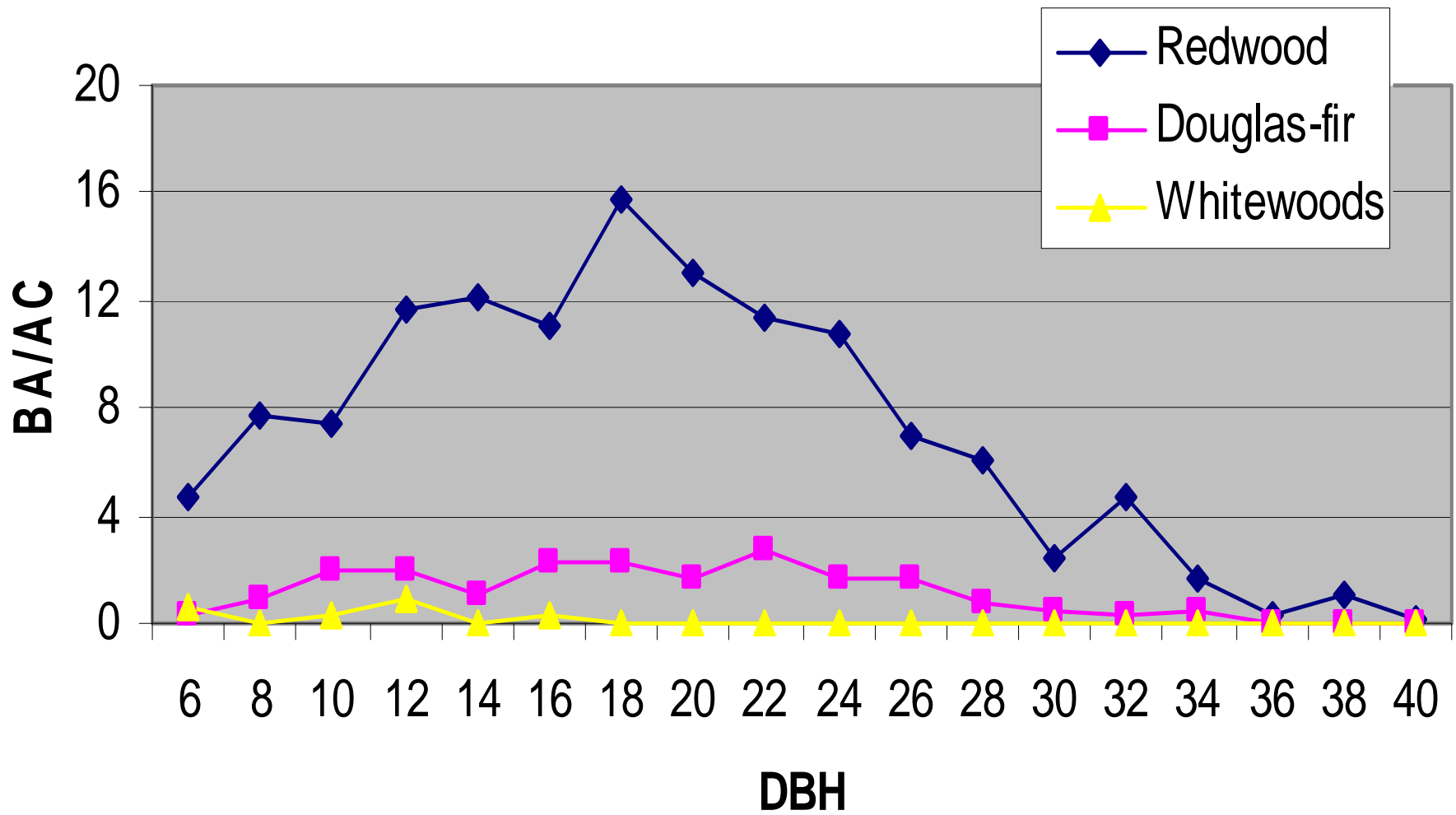
# Hare Creek 2009 BA/ac



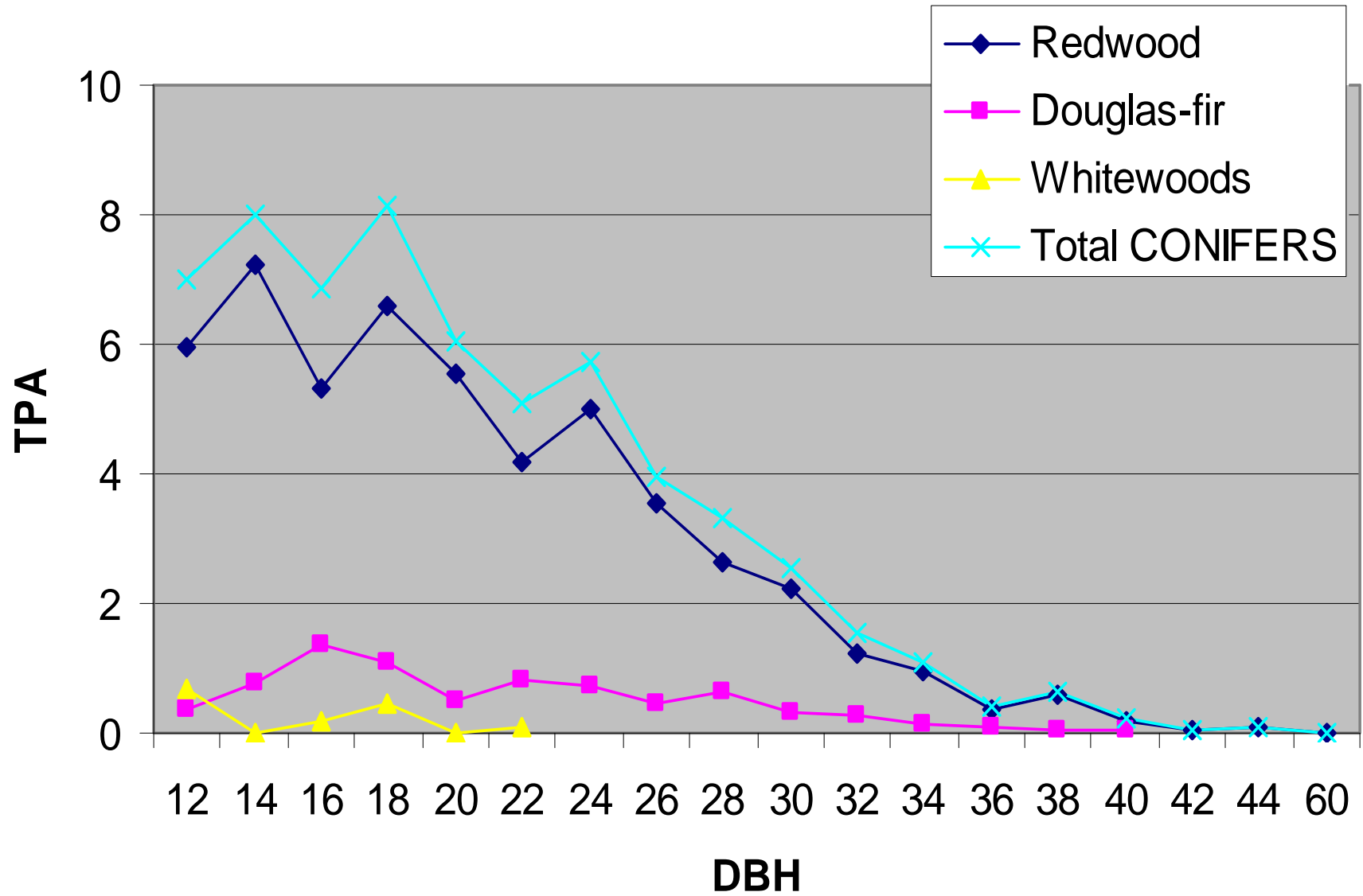
# Hare Creek 2009 Preharvest Stock Table



# Hare Creek 2009 Projected Post harvest Stand



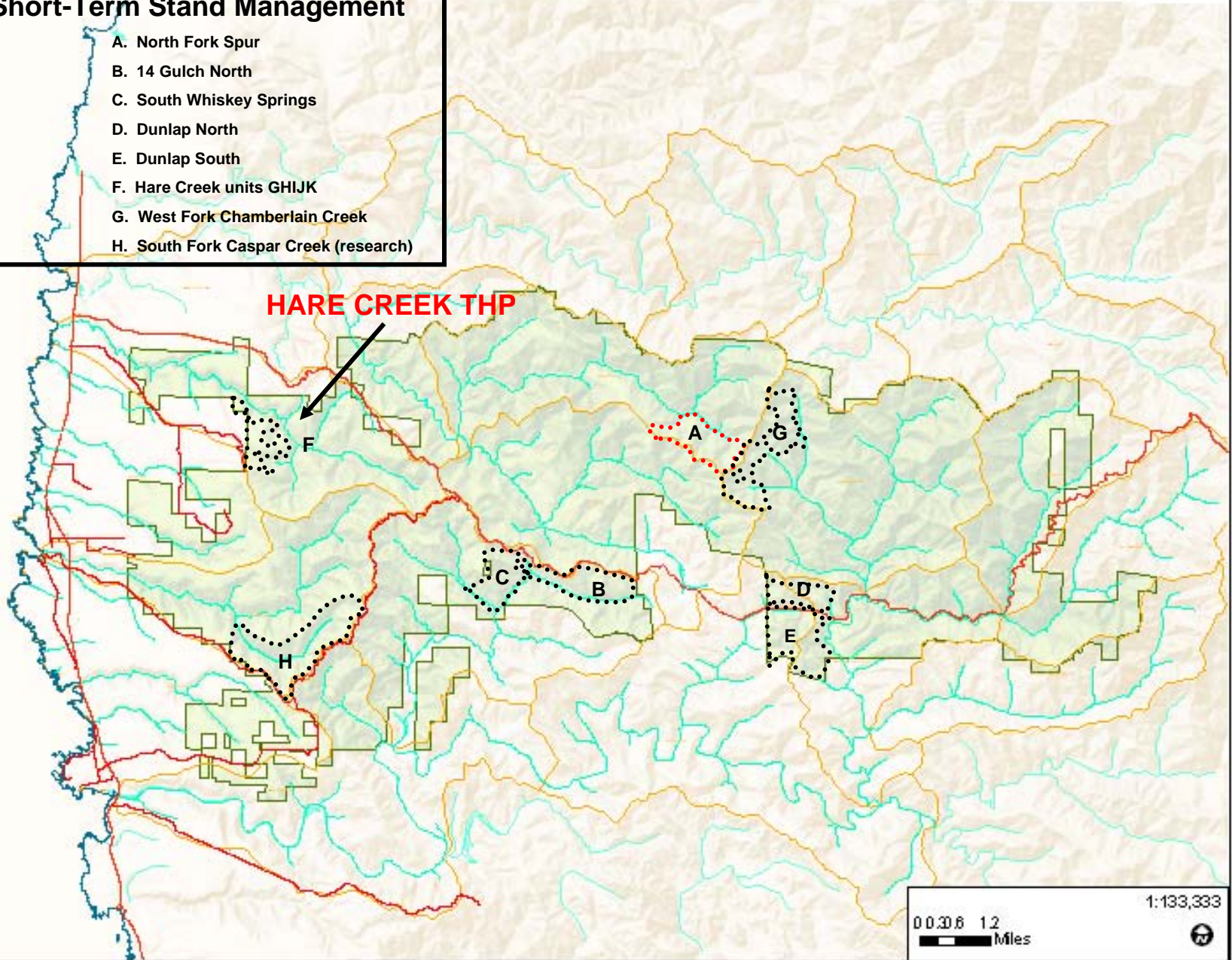
# Hare Creek Theoretical Stand post harvest



## Short-Term Stand Management

- A. North Fork Spur
- B. 14 Gulch North
- C. South Whiskey Springs
- D. Dunlap North
- E. Dunlap South
- F. Hare Creek units GHIJK
- G. West Fork Chamberlain Creek
- H. South Fork Caspar Creek (research)

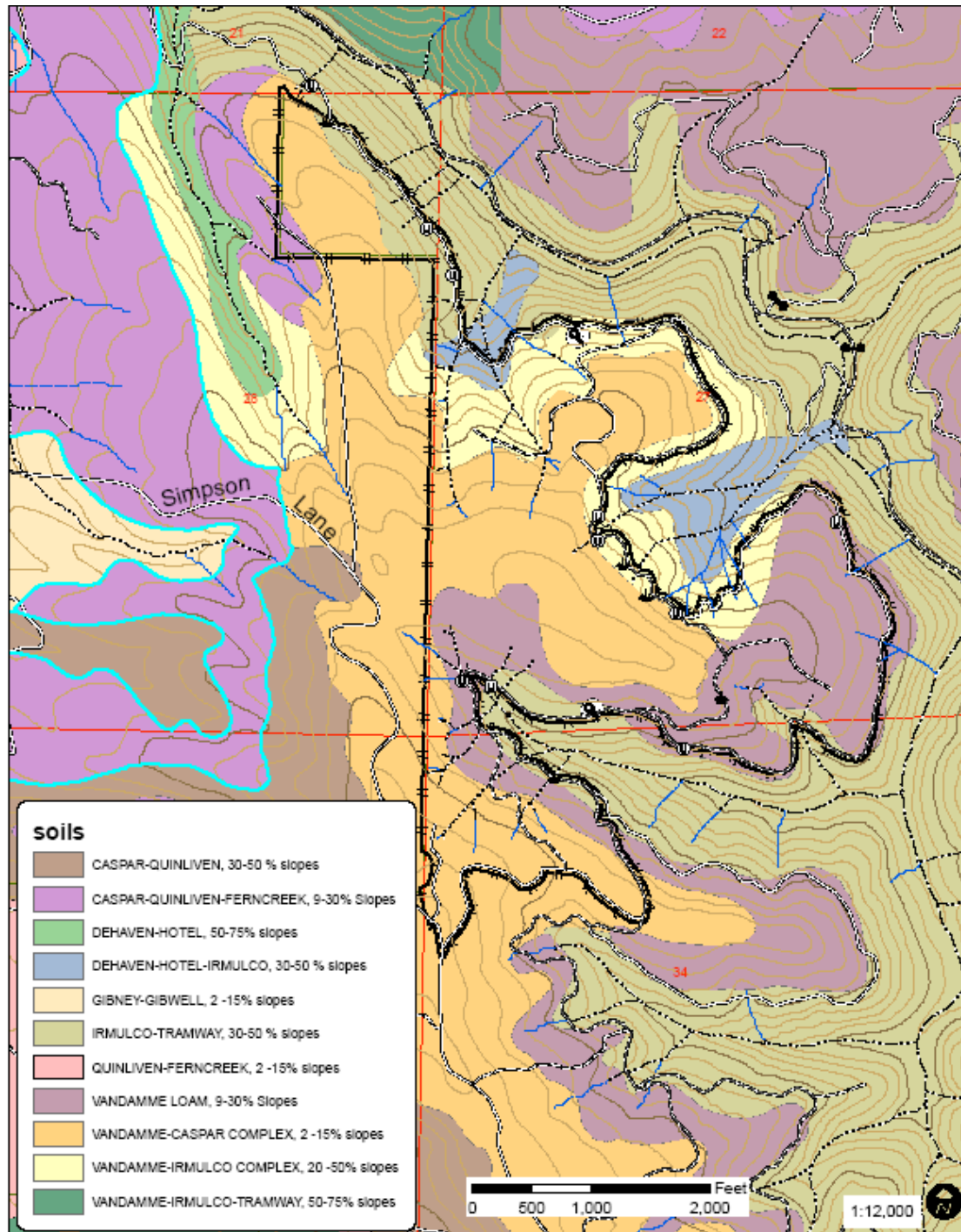
**HARE CREEK THP**



0 0.6 1.2  
Miles

1:133,333





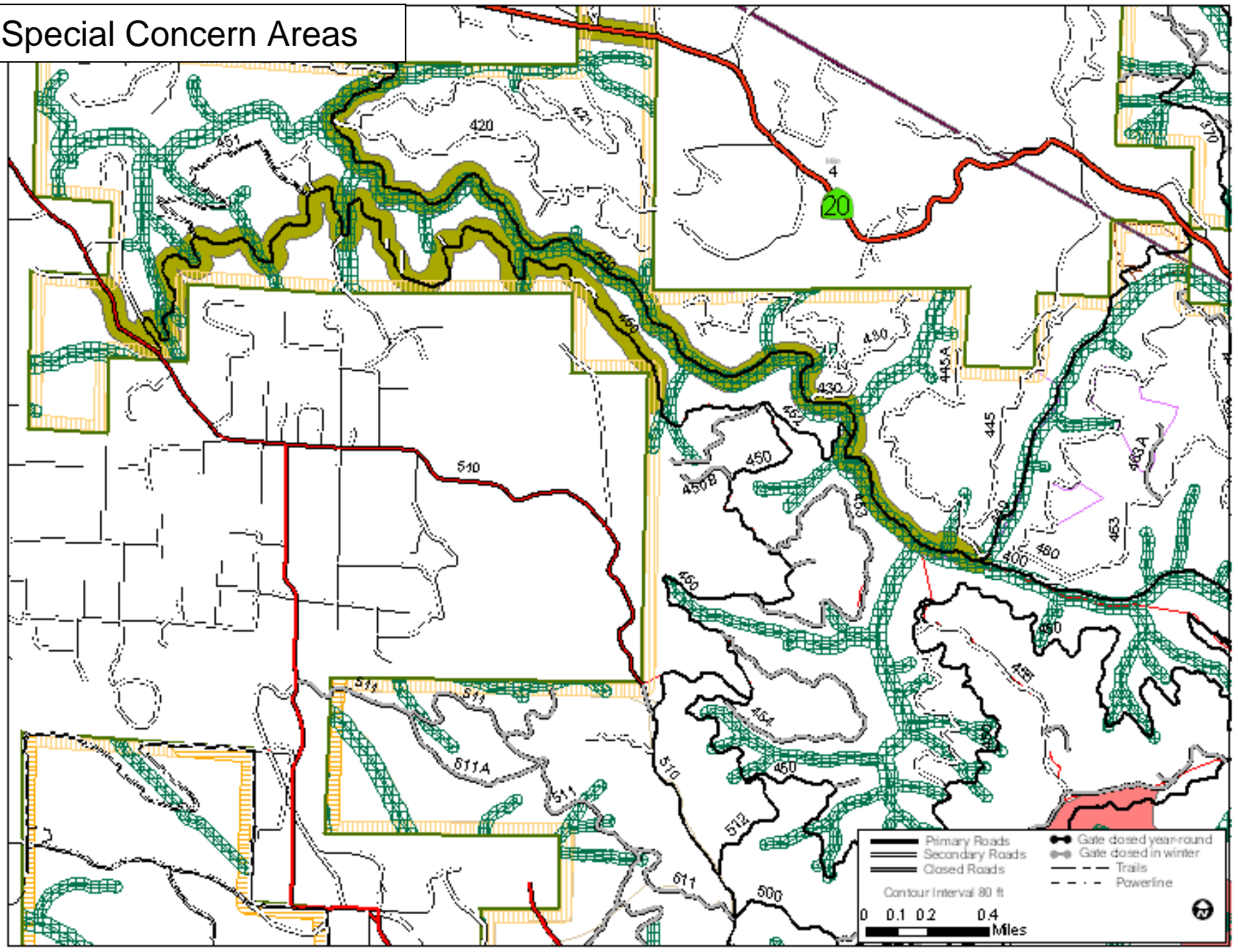


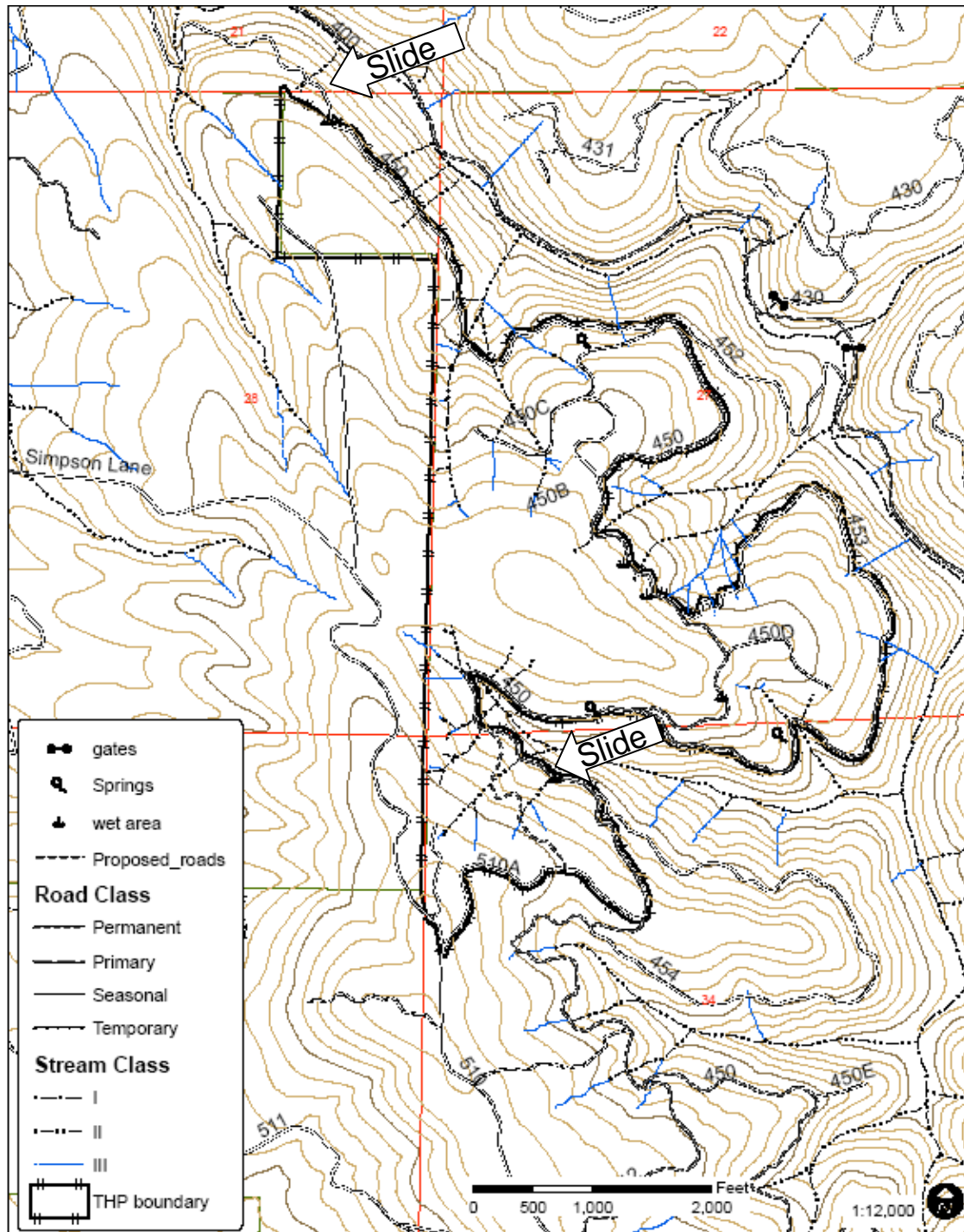




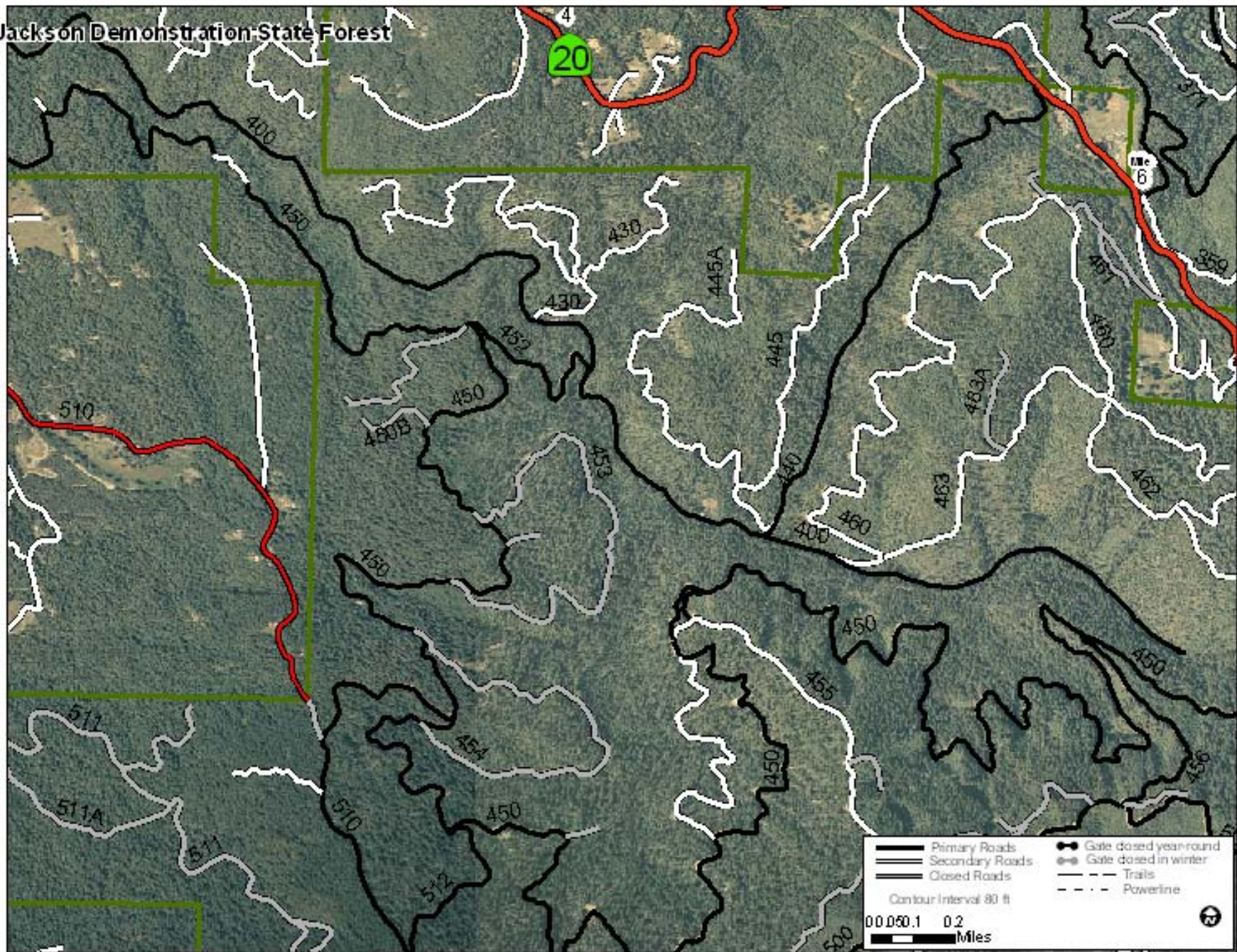


# Special Concern Areas











Jackson Demonstration State Forest



# Jackson Demonstration State Forest

4

6

 Primary Roads	 Gate closed year-round	
 Secondary Roads	 Gate closed in winter	
 Closed Roads	 Trails	
Contour Interval 80 ft		 Powerline
0 0.1 0.2 Miles		